



# IP Configuration Stahl Discover CS-010.01Z

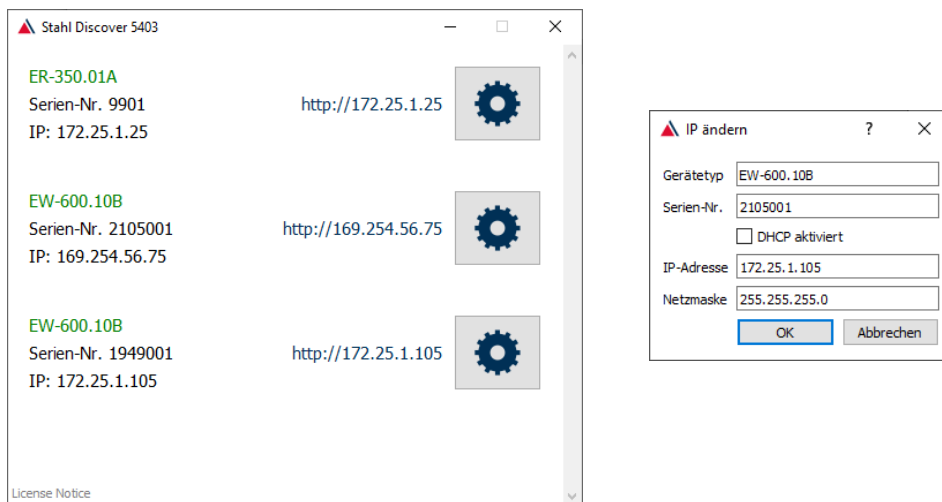
## / Web Interface

### Stahl Discover

The Stahl Discover Windows application provides a tool for comfortably configuring the Ethernet settings of various Stahl devices.

Stahl Discover can be used to configure devices that are no longer accessible due to incorrect Ethernet settings or those whose IP address is unknown.

Connect your device to an Ethernet network and start the software on a PC that is in the same network



All founded devices are displayed. The cogwheel icon takes you to the respective IP settings of the corresponding device.

**Green device title:** Device is reachable.

**Red device title:** Device was reachable, but is currently no longer available.

The following devices are supporting Stahl Discover:

FR-110.11A and FR-110.21A beginning with firmware v1.06

FR-150 beginning with firmware v1.06

ER-350 beginning with firmware v1.03

EW-600 beginning with firmware v1.17

All devices have a fixed IP address at delivery. You can find it in the respective device documentation.

At devices with a display unit, the IP address is shown at the display.

### Web Interface

The web interface of the test instruments can be accessed at <http://ip-address/>.

The IP address can be changed via the web interface in the Configuration->Interfaces menu.

As an alternative to the fixed IP adress, an automatic DHCP IP address can also be activated there.

Order Number Stahl Discover: CS-010.01Z

Stahl Discover

Web Interface